



NC Small Grain Growers ASSOCIATION

NOVEMBER 2015 · NEWSLETTER · FALL EDITION

Table of Contents

Making Wheat Profitable	P. 1
2015 NCSGGA Board of Directors	P. 2
2015 Research Funding	P. 3
Commodities Conf. Agenda	P. 4
Commodities Conf. Registration	P. 5
Barley in North Carolina	P. 6
2015 Events Summary	P. 7
Featured Recipe	P. 7
Calendar of Events	P. 8

Making Wheat Profitable in 2016

Dr. Ron Heiniger, NCSU Professor of Crop Science and Cropping Systems Specialist

As Yogi Berra once said its déjà vu all over again! This year as it was in 2015 all of us are disappointed in commodity prices right now. Corn, Wheat, and sorghum are all trading at prices that are below the cost of production. What rescued us from our pessimism in 2015 was good weather in early November and a rally in prices. While prices have tried to rally the weather certainly hasn't been favorable this fall. HOWEVER – a good grower knows that letting weather or low planting prices dictate his intentions is a good way to miss opportunity. Here is what you need to consider before giving up on wheat.

1. Missed Opportunities – Last year we said you would have the chance to sell wheat for \$6 per bushel. YOU DID! There weren't many days that you had that opportunity but it was there. This coming year you will have the same – or even better – opportunity to sell above \$6. Don't give up on wheat due to low prices. The outlook for wheat is even better in 2015-16 than it was in 2014-15. Many of us will be looking for cash flow next summer. With corn yields down, solar panels up, and soybeans damaged by weather, feeders will be looking to wheat as a good energy and protein source for livestock. Look for good harvest basis at just the right time to make some profit on wheat.

2. Higher Yield and Reduced Risk – When commodity prices are low you want to plant a crop that has consistent yield potential because better yield can cover poor prices. North Carolina wheat growers have had four years of good to great wheat yields despite the fact that they have experienced everything from a warm, dry winter in 2011-12 to a cold, wet year this past season. We can grow high yielding wheat consistently as long as we treat wheat with the respect it deserves and manage it properly. This winter season has a high probability of a warmer January and February. That is good news for those of us planting wheat in mid to late November or even early December. Due to projected warmer weather in January and February this late planted wheat has good to excellent yield potential. **JUST GET IT IN THE GROUND AS SOON AS YOU CAN!**

3. Manage to Increase Yield and Keep Costs Low - When growing a crop in a tight market the key is to do it right – right from the beginning. You can't afford to do "rescue" treatments this season. So start right (your best yield is made the day you plant the seed) and then support that crop with good management at jointing and flowering. Three things to focus on 1) Plant the best seed you can find in the best condition you can put it in. Don't scrimp on seed. When you plant late you need to increase seeding rates – Increase 10-12% these last two weeks in November and another 10-12% when planting in December. Plant only the highest yielding variety, invest in good seed treatments, and plant it at the best seeding rate under the best conditions. 2) Make sure you have N available – wheat needs warm temperature and nitrogen to tiller. When temperatures warm up make sure you have N available for that crop to green up. 3) When jointing comes around next spring be ready to support your yield potential with the proper level of nutrients – particularly N. If you have a good wheat crop growing don't drop the ball and cut the rate on N. Use a tissue test and make sure you have the nutrients you need to keep wheat green and growing from jointing to flag leaf.

THE TIME IS STILL RIGHT TO PLANT WHEAT IN THE FALL ALL THE WAY TO THE MIDDLE OF DECEMBER. Use a higher seeding rate, a good variety, a little fall N and look to lock in a profit when basis improves this coming year. Last year many wheat growers were smiling in June. Why not be one of those smiling this year when your neighbor says, "I wish I had planted wheat like you did!"

2015 BOARD of DIRECTORS

Steve Griffin – *President*, Washington, NC 252-975-3557, Beaufort County

Clifton Paul – *Past President*, Grantsboro, NC 252-745-4310, Pamlico County

Dawson Pugh – *1st Vice President*, Englehard, NC 252-925-3720, Hyde County

Timmy Thomas – *2nd Vice President*, Timberlake, NC 336-597-1131, Person County

David Davenport – *Treasurer*, Greenville, NC 252-752-6930, Pitt County

Darryl Corriher – *Secretary*, China Grove, NC 704-857-6557, Rowan County

Thomas Roach, Hertford, NC 252-339-6611, Perquimans County

Kevin Matthews, East Bend, NC 336-468-2350, Yadkin County

Hunter Stevenson, Elizabeth City, NC 252-333-2904, Pasquotank County

Ron Perry, Wendell, NC 919-818-9266, Wake County

Berry Lewis, Rocky Mt., NC 214-616-2081, Nash County

Marion Keech, Belhaven, NC 252-943-3141, Beaufort County

Mike McPherson, Bladenboro, NC 910-840-7410, Bladen County

Robert Foscue, Clayton, NC 919-771-4829, Johnston County

Frankie Revels, Williamston, NC 252-809-2290, Martin County

Murray McClenny, Mt. Olive, NC 919-635-0754, Wayne County

Jack Alphin, Mt. Olive, NC 919-738-2042, Duplin County

Adam Stewart, Newton, NC 828-244-7269, Catawba County

Jim Radford, Mt. Airy, NC 336-374-8419, Surry County

Andrew Gardner, Marshville, NC 704-975-4741, Union County

Rick Morris, Bladenboro, NC 910-866-5485, Bladen County

John Glover, Elm City, NC 252-243-6965, Wilson County

Lacy Cummings, Pembroke, NC 910-827-1211, Robeson County

Drew Medlin, Indian Trail, NC 704-226-8020, Union County

Dan Weathington, Executive Director,
206 East 19th Street, Lumberton, NC 28358
Office/Cell#: 910-739-0236, 910-736-8258

Nikki Johnson, Marketing & IT
3822 Bland Rd, Raleigh, NC 27609
Office: 919-809-8657

2015 RESEARCH FUNDING - RENEWALS		Amount
Project #	Funding Request Description	Funded
code 11-08	Problem Diagnosis Support for Cooperative Extension Agents <i>C.R. Crozier, B.B. Shew, K. Hicks</i>	1,000
14-06	Use of Growth Regulators to Manage Late Tiller Development in Wheat <i>R.W.Heiniger</i>	16,341
14-08	Small Grain Variety and Germplasm Development <i>J.P. Murphy</i>	50,000
14-09	Application of the Doubled Haploid Technology to Wheat Variety Development - <i>J.P. Murphy</i>	74,000

Total RENEWAL Amount Funded: 141,341

2015 RESEARCH FUNDING - NEW PROJECTS		Amount
Project #	Funding Request Description	Funded
16-01	Drone Technology for Mapping and Managing Weed Species in Wheat <i>W.J.Everman</i>	28,150
16-03	Italian Ryegrass Response to Common Grass Herbicides <i>W.J.Everman</i>	5,000
16-04	Utilizing Crop Rotation and Tillage to Manage Italian Ryegrass <i>W.J.Everman</i>	12,000
16-05	Developing Customized Variety Specific Management Systems <i>R.W.Heiniger</i>	37,507
16-06	NCSU Small Grain 2016 Field Day and Extension Associate <i>Extension Associate - J. Edgell</i> <i>NE Ag Expo - Al Wood</i> <i>Central Tidewater - Rod Gurganus</i> <i>Central Piedmont - Joe Hampton</i> <i>Southern Piedmont - Andrew Baucom</i> <i>Coastal Plains - Mac Malloy</i> <i>Dr. Heiniger (Assistance at NE Ag Expo & Central Tidewater)</i>	93,980 8,330 10,900 8,000 9,000 8,000 3,000
16-07	Technical Salary Support - Brandon Poole <i>J.P.Murphy</i>	33,150
16-08	Italian Ryegrass Control in Rapeseed Production <i>S.C. Reberg-Horton, A.C. York</i>	9,726
16-09	Protecting Seed Treatments for Hessian Fly <i>D.D. Reisig</i>	10,000
16-10	Optimum Poultry Litter and Manure Utilization for Wheat <i>C.R. Crozier, T.J. Smyth, D.L. Osmond, D.A. Crouse</i>	9,912
16-12	An Expanded Plant Growth Regulator Effort with Support of the Official Variety Testing Program - <i>A.L. Baucom, K.R. Gurganus, D.M. Malloy</i>	12,000
A	Genomic Selection for Grain Yield, Test Weight and Scab Resistance in NCSU and USDA-ARS Wheat Breeding Programs (New) <i>G. Brown-Guedira, D. Marshall, USDA-ARS; J.P. Murphy, NCSU</i>	34,302
B	Improving Small-Grain Disease Management in North Carolina (Renewal) <i>C. Cowger, USDA-ARS</i>	30,000
C	Testing for biological soil quality in long-term no-tillage cropping systems to better predict timing and rate of nitrogen application to wheat (New) <i>A. Franzluebbbers, USDA-ARS; S. Gibson, Extension</i>	10,000
D	Development and Testing of Malting-Quality Winter Barley (New) <i>D. Marshall, USDA-ARS</i>	15,000
E	Expanding end-use and increasing yield potential in wheat (Renewal) <i>D. Marshall, USDA-ARS</i>	30,000
H	Additional support for new service truck - Coop. Extension in Beaufort Hyde, Washington, and Tyrrell Counties - <i>R. Gurganus</i>	4,000

Total NEW Projects Amount Funded: 421,957

Total Amount Funded, ALL Projects: 563,298



27th Annual NC Commodities Conference January 13th – 15th Sheraton Imperial Hotel & Convention Center

You are invited to attend the 27th Annual NC Commodities Conference of the NC Corn, Small Grain, Soybean and Cotton Producers Associations. The event is an informative and educational conference dedicated to discussing challenges of farming in the 21st Century. Come along and find out the latest in trends and technologies, and hear from some of the leading figures in the industry today.

Make Your Hotel Reservations NOW!

The number of rooms blocked for the Commodities Conference is limited!

Sheraton Imperial Hotel & Convention Center: 4700 Emperor Blvd., I-40 at exit 282 (Page Rd) Durham, NC 27703

Reservation Office: (919) 941-5050 or (800) 325-3535.

Reservations must be received no later than **December 15, 2014**.

Please mention that you are with the NC Small Grain, Soybean, Corn and Cotton Producers Association so you will receive the preferred group rate of **(\$117.00)**. All reservations are based on availability.

LADIES PROGRAM

Ladies you are invited to stop by our “Ladies Lounge” during the day on Thursday from 10:00am to 3:00pm for refreshments and to get a neck, back or hand massage and while you are there you may want to do a little shopping from our jewelry vendor!

Schedule at a Glance

Wednesday, January 13th, 2016

- 5:00pm NC Soybean Producers Association Celebrates 50 years Reception!

Thursday, January 14th, 2016

- 7:30am Registration and Complimentary Breakfast
- 9:00am State of NC Agriculture Q&A with Commissioner Steve Troxler, NCDA&CS
- 9:35am Market Outlook – Mark Gold, Marketing Analyst with Top Third Marketing Chicago, IL
- 10:45am Plant Science Initiative and Promotion of NC Bond – Dr. Richard Linton, CALS Dean NCSU
- 12:00 Noon Lunch & Visit with Exhibitors
- 1:00pm Commodity Production Seminars, Production & Efficiency Awards, Annual Meetings (Corn & Cotton)
- 5:00pm Reception in the Exhibit Hall
- 6:00pm Banquet
- 8:00pm – 11:00pm Entertainment (The Embers)

Friday, January 15th, 2016

- 7:30am Complimentary Breakfast and Visit with Exhibitors
- 8:30am National Association of Wheat Growers Update
- 9:00am Commodity Production Seminars, Production & Efficiency Awards, Annual Meetings (Soybeans & Wheat)
- Adjourn

Complete this Form to Register for the 2016 Commodities Conference

Complete the reply form below to make your lunch, banquet and breakfast reservations. The only fee you pay is the nominal \$20 charge for each banquet ticket you order. Your name badge and tickets will be held for you at the Conference registration desk. For more information please visit: <http://www.nccommoditiesconference.com/index.php>

Please return this form to let us know you are coming so we can plan meal functions accordingly.

Name: _____ Spouse/Guest Name (If attending): _____

Company/Farm/Organization: _____

Address: _____

City _____ State _____ Zip _____

Telephone: _____ Fax: _____

Email: (Please provide us with your email) _____

Please indicate if your work is primarily:

GROWER:

INDUSTRY: Sales Research

UNIVERSITY: Extension Research Teaching Student Administration

GOVERNMENT ASSOCIATION MEDIA OTHER _____ (Please specify)

Wednesday, January 13, 2016

Yes, I will attend the Pre-Opening Reception in the Exhibit Hall (heavy Hors d'oeuvres)

Thursday, January 14, 2016

Complimentary Breakfast: Sausage and Ham Biscuits, Danishes, Juices and Coffee

Yes, I will attend the breakfast (number attending) _____ No, I will not be at the breakfast

Complimentary Luncheon

Yes, I will attend the Lunch (number attending) _____ No, I will not attend the Lunch

Banquet

Yes, I will attend the Banquet. Enclosed is \$ _____ for _____ banquet tickets @ \$20 each.

No, I will be unable to attend the banquet.

Friday, January 15, 2016

Complimentary Breakfast: Sausage and Ham Biscuits, Danishes, Juices and Coffee

Yes, I will attend the breakfast (number attending) _____ No, I will not be at the breakfast

Method of Payment for Banquet

Name of Cardholder: _____

Billing Address of Card: _____

Card Type: _____ Card #: _____ Expiration Date: _____

Mail form to: NC Joint Grains Conference, PO Box 58220, Raleigh, NC 27658 or Fax Form to: 919-882-8533

If paying by check, please make checks payable to: NC Joint Grains Conference

Barley in North Carolina

By Dr. David Marshall, USDA-ARS

The USDA estimates the acreage planted and harvested per year to barley in NC was highest between 1960 and 1985 (Figure 1). During those years, NC farmers planted an average of about 74,000 acres per year, harvesting about 85% of those acres, for a yearly average of 3 million bushels, worth about \$4.2 million/year. However, there was a steady decrease in acreage between 1986 and 2014, with planted acreages between the years 2000 and 2014 leveling at about 23,000 acres per year, producing a yearly average of 1.1 million bushels, worth about \$2.9 million. During the entire 85 years from 1930 to 2014, barley yields increased from about 17 to 71 bushels/acre. The highest average yields (80 bu/acre) were achieved in the years 1999, 2000, 2006, and 2011. Of course, many economic, agronomic, disease, and weather factors influence barley production in North Carolina.

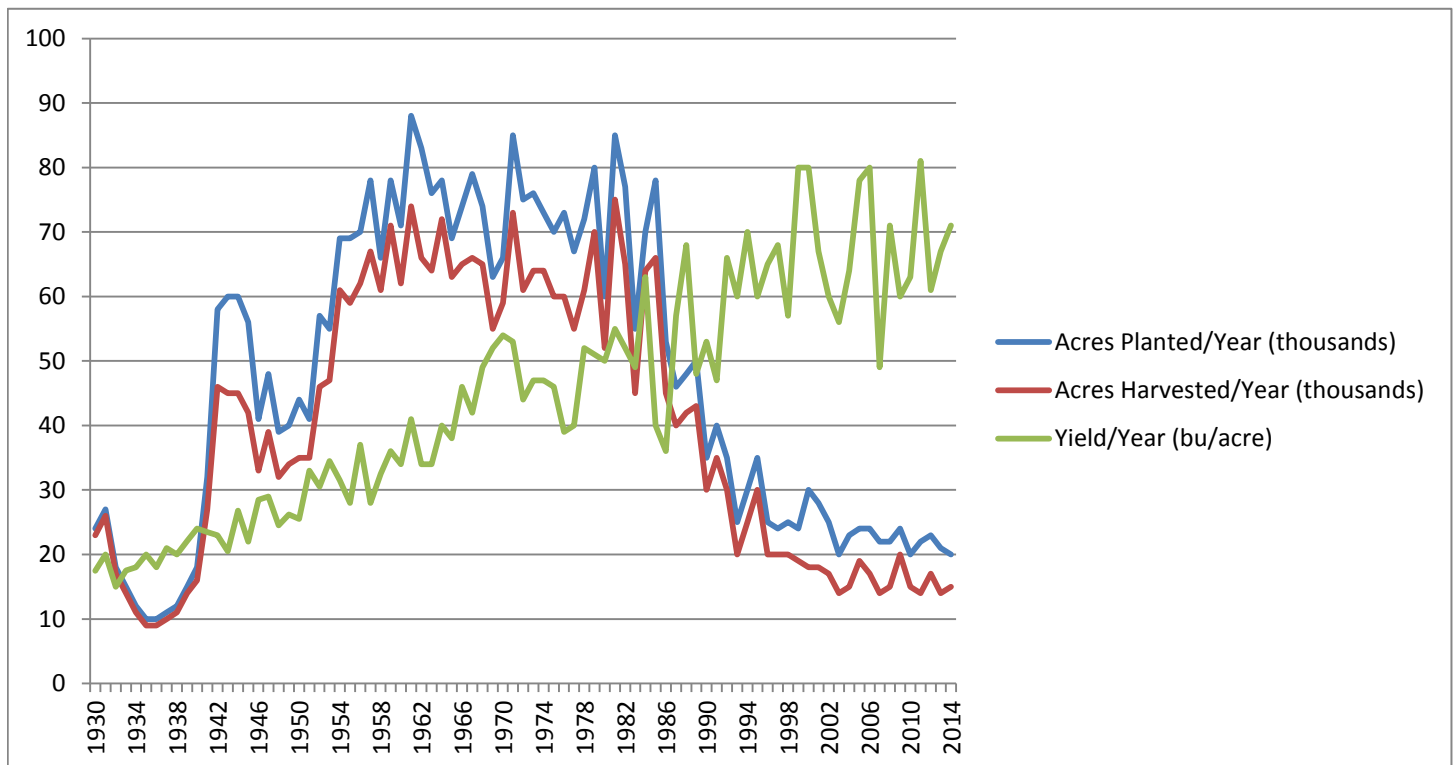


Figure 1. Thousands of acres planted and harvested; and yield/acre of barley from 1930 to 2014 in North Carolina.

A promising factor in recent years has been to improve the end-use of barley grain. Traditionally, barley grain has been used as animal feed, and has had a gross price per bushel of about \$3.80 since 2010. In 2010, the USDA-ARS program in Raleigh has sought to breed winter barley having malting quality. The challenges to accomplish this goal are many, including yield potential, percent extractable starch, seed dormancy, pre-harvest sprouting, disease susceptibility, and winter-hardiness. However, with funding from USDA-ARS, the NCSGGA, and the American Malting Barley Association, significant progress has been made toward the goal of having high-yielding, well-adapted, winter malting barley varieties (hopefully, both 2- and 6 row) for North Carolina in 2017 or 2018. This should help the current malt houses in NC, like Riverbend Malt House in Asheville, and Epiphany Malt in Durham to continue their excellent work in serving the craft and local beer industry with superior malt products.

2015 NCSGGA Summary of Events : 81 Days / 51 Events / 171,583 People

# of Days	Attendance	Agriculture Outreach Events
2	700	Joint Conference
3	100,000	Farm Show
1	1500	Ag Day At the Legislature
1	125	Craven County Ag Day
1	120	Mt. Olive Ag Day
1	250	Bailey Elementary School Ag Day
3	50,000	Got to be NC Festival
2	700	North Carolina FFA Convention
1	2000	Celebrating Agriculture in the Park
1	300	Partnership Elementary School Fun Family Frolic
3	750	Hoke County Ag Awareness Week
3	700	Stanly County Ag Awareness Week
1	150	Person County Ag Field Day
1	300	Farm City Week Banquet
1	1500	Northeast Regional Ag Expo – FFA Ag Day
1	225	Wagram Elementary Health Fair
Research Field Days		
1	150	Northeast Ag Expo Small Grain Field Day
1	80	Central Piedmont Small Grain Field Day
1	75	Southern Coastal Plain Small Grain Field Day
1	120	Southern Piedmont Small Grain Field Day
1	150	Eastern Tidewater Small Grain Field Day
1	75	Syngenta Small Grain Field Day
1	250	Camden County Field Day
1	450	Blackland Farm Managers Tour Field Day
1	175	Dupont Pioneer Corn/Soybean Field Day
National Wheat Events		
4	300	National Association of Wheat Growers Winter Conf.
1	100	Wheat Fly In – Capital Hill Visits to U.S. Congress
4	7936	Commodity Classic Tradeshow/NAWG Mtgs.
4	300	National Association of Wheat Growers Fall Conf.
NCSGGA Board Meetings		
1	30	Winter Board of Directors Mtg.
1	15	Research & Education Committee Mtg.
2	30	Summer Board of Directors Mtg.
2	30	Fall Board of Directors Mtg.
Agriculture Related Events/Meetings		
2	100	NCSU CALS Partners Mtgs.
2	22	NCSU Cooperative Extension Board Mtgs.
2	50	Feed Grain Initiative Mtgs.
1	300	NC Ag Products Dinner
1	35	USDA Tetrapetite Banquet
2	200	NAADA Award Ceremony
1	30	Animal Ag Coalition Mtg.
3	200	NC Seedsmens Convention
1	350	Commissioner’s Food Safety Forum
2	25	NCSU Research Foundation Mtg.
1	50	Connect NC Bond Act Signing
1	50	NCSU Plant Science Initiative Celebration
1	20	NC FFA Co-Hort Teacher Training
1	220	State 4-H Council Conference
3	10	NC Commodities Conference Planning Committee Mtgs.
1	300	FFA Sales Competition
1	10	Engage Social Media Training
1	25	Agriculture Focus Group Mtg.

Featured Recipe:

Caprese Pasta Salad



Ingredient List:

- 1 (13.25 ounce) box whole-wheat penne (or other shape) pasta
- 4 medium tomatoes, chopped or 1 pound grape tomatoes, halved
- ½ pound fresh low-fat, mozzarella cheese, in ½” cubes or fresh mozzarella “pearls”
- 1/3 cup chopped fresh sweet basil
- ¼ cup olive oil
- 1 tablespoon Italian seasoning
- 1 tablespoon balsamic vinegar
- ½ teaspoon salt (optional)

Directions:

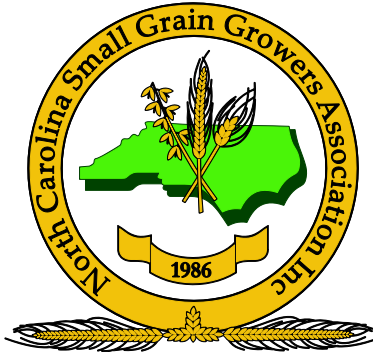
Cook pasta according to package directions. Rinse with cold water and drain. Add tomatoes, cheese and sweet basil.

In a separate small bowl, combine oil, seasoning, vinegar and salt (if using). Add to pasta mixture and chill.

Servings: 10; Calories/Serving 266

Nutrition: One serving provides approximately: 9g Protein, 31 g Carbohydrates, 4 g Fiber, 12 g Fat (4 g saturated), 18 mg Cholesterol, 1 mcg Folate, 1 mg Iron, 22 mg Sodium

Source: Wheat Foods Council
<http://www.wheatfoods.org/>



NC Small Grain Growers Association

3822 Bland Rd.
Raleigh, NC 27609

Calendar of Events

December 10th -11th, 2015

NCSGGA Board of Directors Meeting
Sheraton Imperial Hotel
4700 Emperor Blvd.,
I-40 at exit 282 (Page Rd)
Durham, NC 27703

January 13th, 2016

NCSGGA Board of Directors Meeting
Sheraton Imperial Hotel
4700 Emperor Blvd.,
I-40 at exit 282 (Page Rd)
Durham, NC 27703

January 13th- 15th, 2016

NC Commodities Conference
Sheraton Imperial Hotel
4700 Emperor Blvd.,
I-40 at exit 282 (Page Rd)
Durham, NC 27703

February 2nd – 6th, 2016

Wheat Industry Winter Conference
Hyatt Regency Capitol Hill
Washington, D.C.

February 3rd – 5th, 2016

Southern Farm Show
NC State Fair Grounds
Raleigh, NC

March 2nd – 3rd, 2016

National Association of Wheat
Growers Annual Meeting
New Orleans, Louisiana

March 3rd – 5th, 2016

Commodity Classic
New Orleans, Louisiana

If you would like to receive our newsletter electronically along with weekly Wheat updates from our association please email Nikki Johnson at: nfjohnson0902@gmail.com and we will add you to our email distribution list. As always for more information and resources please visit our website at ncwheat.com Thank you!